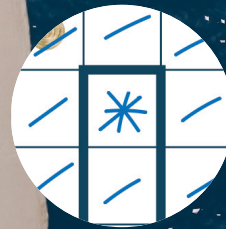




Fill in the three rows of Morse code,
look at it for a long time, not just a short time!
Don't fill in the gaps.

Look at the stars!
Two in each row,
two in each column,
two in each shape and
no two of them touch,
not even diagonally.
That's so special!



EMERGENCY TELEGRAPH NOTE

Row 1 = N or S coordinate *Look at the sea map*
Row 2 = Distress command
Row 3 = E or W coordinate *Look at the stars*

Example coordinate: E37,28

